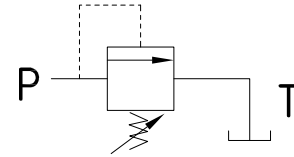
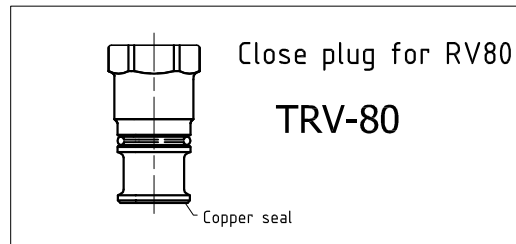
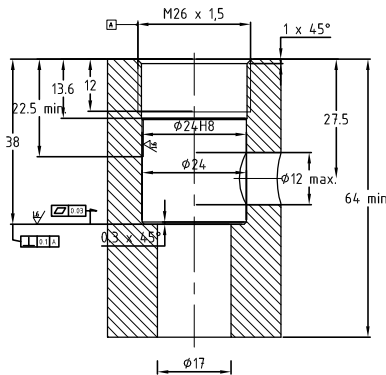
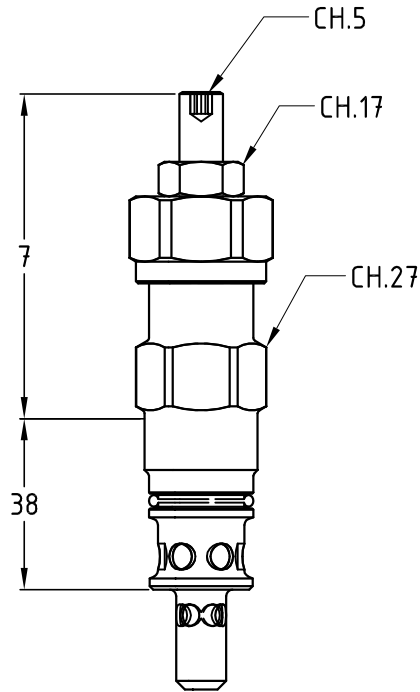


# RV-80

Cartuccia di massima pressione  
Pressure relief valve



## Cavity RV80



- La taratura della pressione si ottiene allentando il dado di bloccaggio ch.17 e ruotando la vite della cartuccia ch.5.
- Fluido da utilizzare: olio idraulico a norme DIN 51524 con viscosità compresa tra 30 e 100 mm<sup>2</sup>/s (cSt) a 40° C
- Filtrazione richiesta del fluido impiegato 25µ
- Temperatura fluido idraulico: da -20° a +75° C

- Calibration pressure is obtained by loosening the lock nut ch.17 and turning the cartridge screw ch.5.
- Fluid to be used: hydraulic oil to DIN 51524 standards with a viscosity between 30 and 100 mm<sup>2</sup>/s (cSt) to 40° C
- The fluid filtration requested is 25µ
- Temperature hydraulic fluid: -20° to +75° C

## Esempio di ordinazione - Ordering code

RV    80    \*

Cartuccia di massima pressione  
Pressure relief valve

80 = Q. 80 L/min.

Y=5÷55 bar    A=25÷110 bar    B=70÷250 bar  
C=70÷350 bar



# RV-80

## DIAGRAMMI FLUSSO

