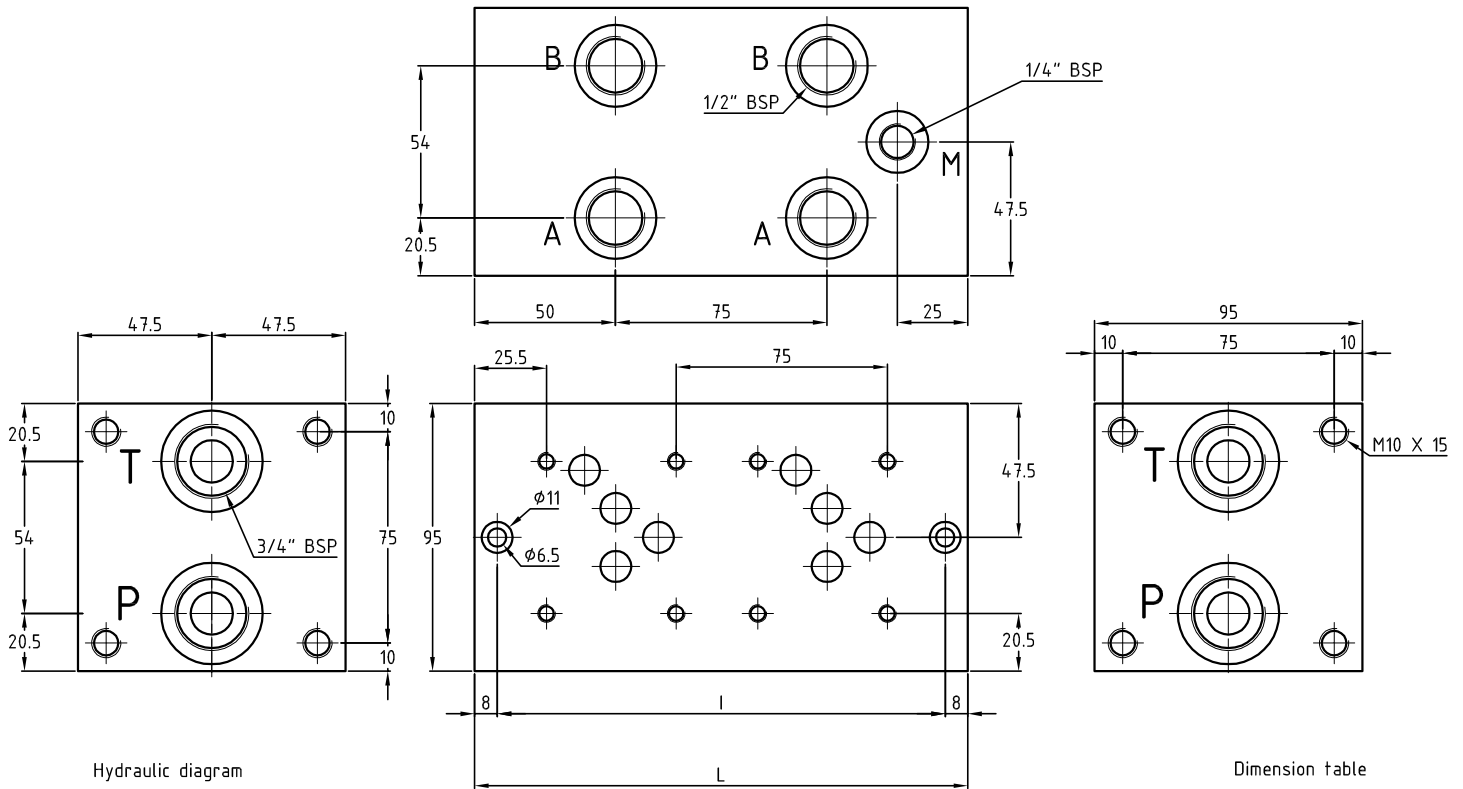
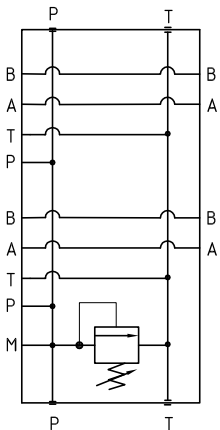


# MB 35

Piastre multiple in ghisa per elettrovalvole Cetop 05 con utilizzi A-B laterali  
 Monoblock in cast iron for electrovalves Cetop 05 with A-B side ports



Hydraulic diagram



Dimension table

	N° Stat.	L	I	Kg
solo versione 0 only version 0	1/0	100	84	6
solo ver. 1 or 2 only ver. 1 or 2	1/1	140	124	9
	2	175	159	11
	3	250	234	16
	4	325	309	21
	5	400	384	26
	6	475	459	31

## Esempio di ordinazione - Ordering code

MB35 / \* S \*\* \* \*

Monoblocco in ghisa Cetop 05  
 Block in cast iron Cetop 05

N° di posizioni  
 Stations number

S = attacchi A-B laterali  
 S = side ports A-B

Y=5÷55bar A=25÷110 bar B=50÷250 bar  
 C=75÷350 bar Q=80 lt/min

0 = senza valvola di max.

0 = without relief valve

1 = pred. per valvola di max. RV 80

1 = prearranged for relief valve RV 80

2 = con valvola di max. RV 80 (pag. M06)

2 = with relief valve RV 80 (page M06)

12 = attacchi da 1/2" BSP

12 = ports 1/2" BSP

34 = attacchi da 3/4" BSP

34 = ports 3/4" BSP