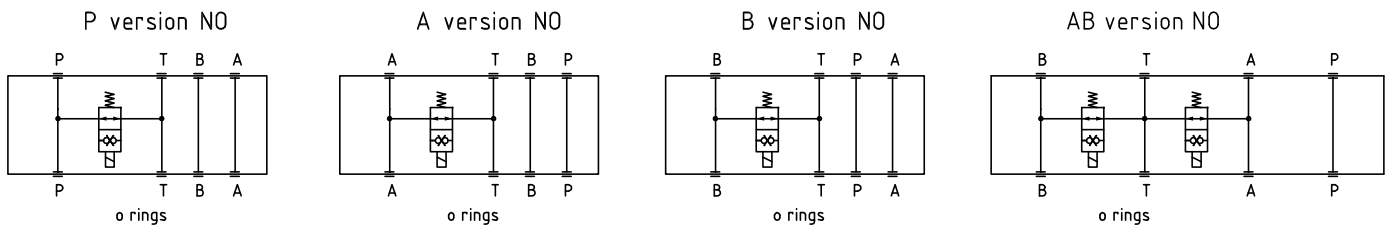
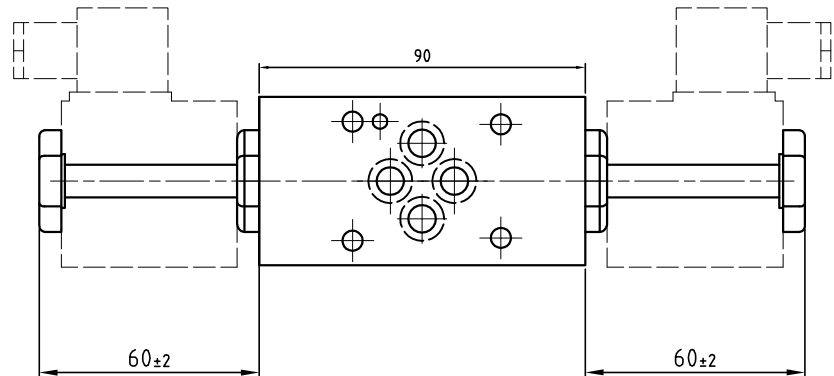
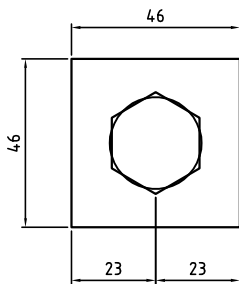


# EMV3\*\*

Valvola modulare di messa a scarico Cetop 03 in ghisa  
 Modular venting valve Cetop 03 in cast iron



## Esempio di ordinazione - ordering code

**EMV 3 \*\* \*\* \***

Elemento modulare messa a scarico in ghisa  
 Modular element in cast iron with solenoid valve for Venting

Cetop 03

A = Valvola su A  
 A = Valve on A

B = Valvola su B  
 B = Valve on B

AB = Valvola su A e B  
 AB = Valve on A and B

P = Valvola su P  
 P = Valve on P

Tensione solenodie  
 Solenoid coil

12DC=12 VDC 24DC=24 VDC  
 24AC=24 VAC-50/60Hz

110AC=110 VAC-50/60Hz  
 220AC=220 VAC-50/60Hz

Vedere sez. P NO = normalmente aperto  
 NO = normally open

See section P NC = normalmente chiuso  
 NC = normally closed