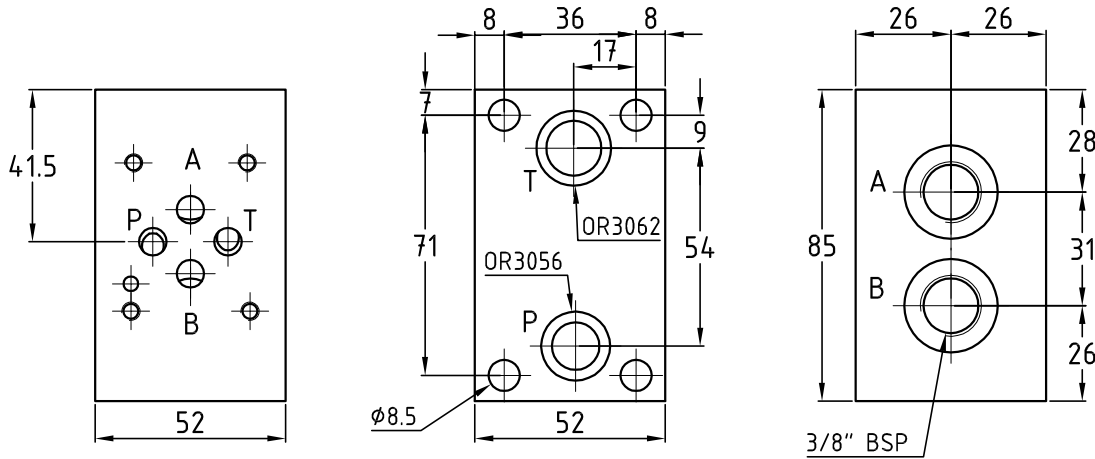


PC34I

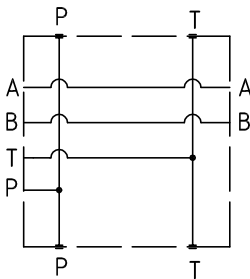
Piastra intermedia modulare in ghisa a 4 tiranti
Intermediate element in cast iron 4 tie-rods version



Hydraulic diagram

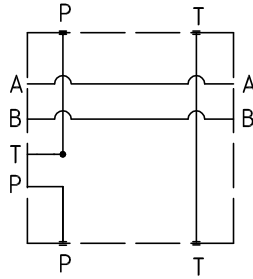
Peso\Weight 1,4 kg

Vers. P



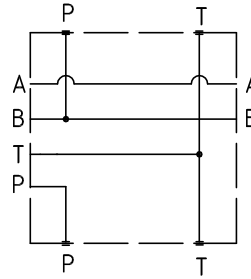
coll. in parallelo
parallel conn.

Vers. S

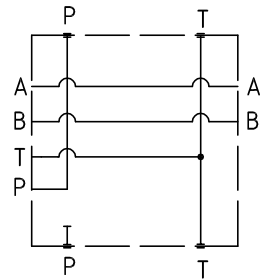


coll. in serie
series conn.

Vers. RP



Vers. CP



Esempio di ordinazione - Ordering code

PC3 4 I/ **

Piastra componibile in ghisa Cetop 03
Packing plate in cast iron Cetop 03

N° 4 tiranti
N° 4 tie-rods

Piastra intermedia
intermediate element

Omettere se coll. in parallelo P
Omit if parallel conn. P

S = collegamento in serie
S = series connection

RP = per valvola riduttrice
RP = for reducing valve

CP = versione simbolo CP
CP = vers. hydraulic symbol CP