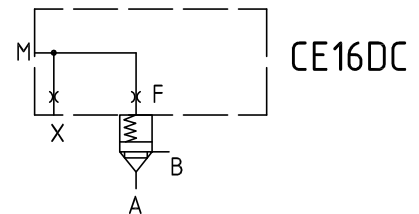
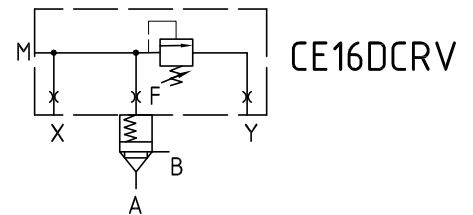
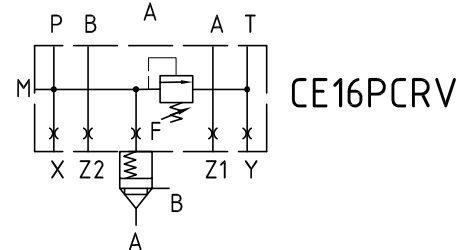
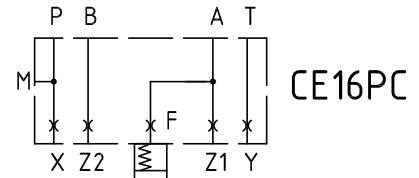
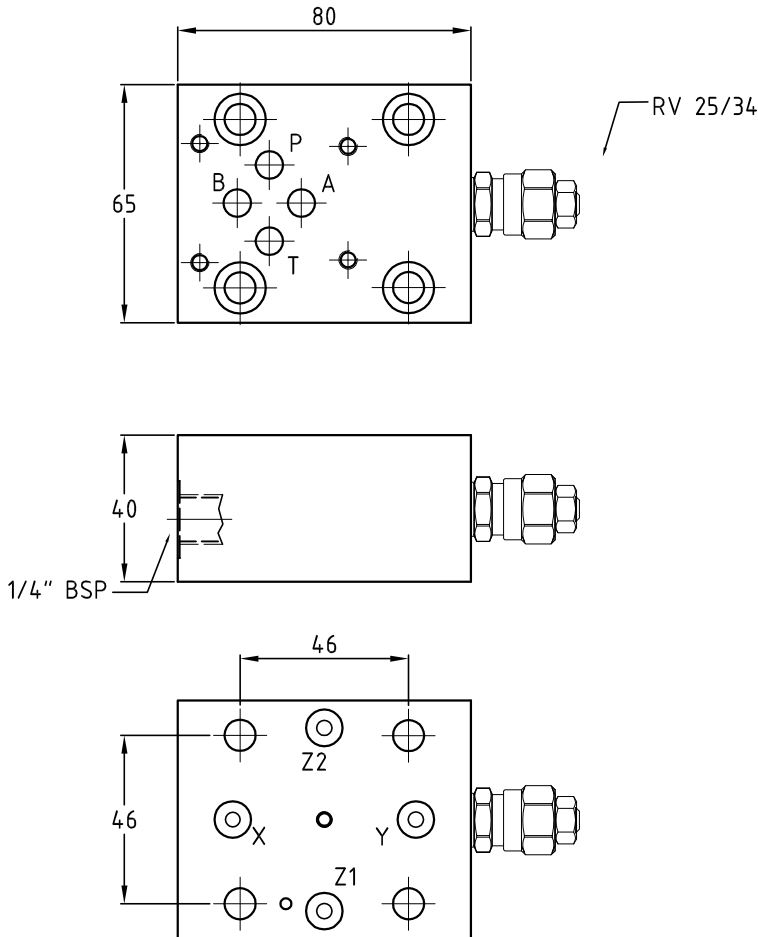


CE16**

Elemento di chiusura in ghisa/acciaio a norme DIN 24342
Closing element in cast iron/steel DIN 24342



Esempio di ordinazione - Ordering code

CE	16	**	*
Elemento di chiusura in ghisa/acciaio Closing element in cast iron/steel	16 = grandezza DN16 16 = size DN16		A=30÷100 bar B=50÷210 bar C=100÷350 bar Solo nella versione RV - Only in RV version
		DC = elemento di chiusura DC = closing element	
		DCRV = elemento di chiusura con valv. di max. RV30 DCRV = closing element with relief valve RV30	
		PC = elemento di chiusura con pred. per pilotaggio PC = closing element arranged for pilot	
		PCRV = elem. chiusura con pred. pilot. e val. di max. RV30 PCRV = closing el. arranged for pilot and relief valve RV30	