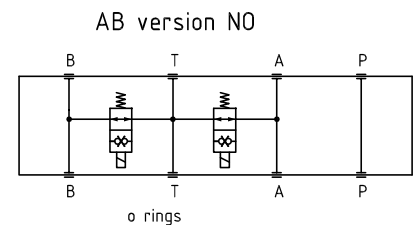
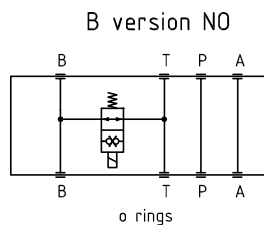
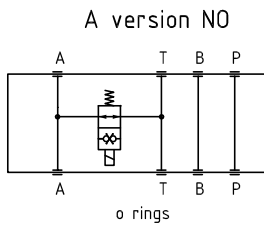
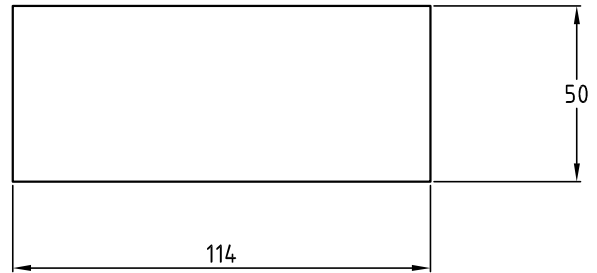
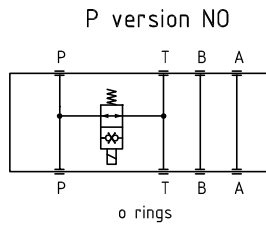
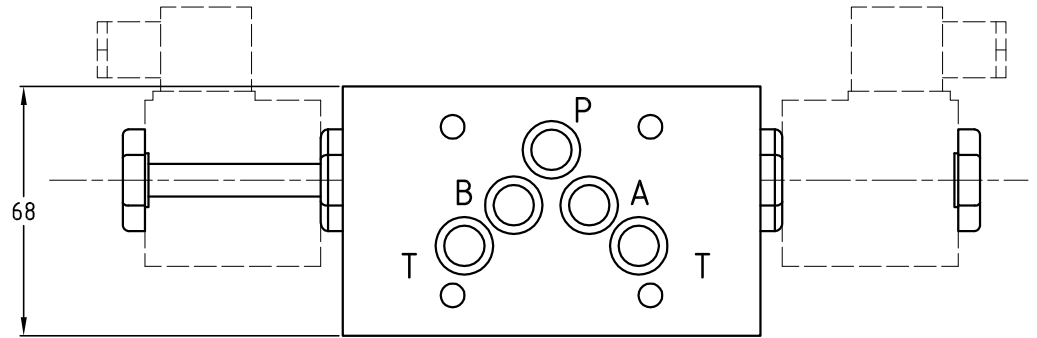


EMV5**

Valvola modulare di messa a scarico Cetop 05 in ghisa
Modular venting valve Cetop 05 in cast iron



Esempio di ordinazione - ordering code

EMV 5 ** ** *

Elemento modulare messa a scarico in ghisa
Modular element in cast iron with solenoid valve
for Venting

Cetop 05

A = Valvola su A
A = Valve on A

B = Valvola su B
B = Valve on B

AB = Valvola su A e B
AB = Valve on A and B

P = Valvola su P
P = Valve on P

Tensione solenodie
Solenoid coil

12DC=12 VDC 24DC=24 VDC
24AC=24 VAC-50/60Hz

110AC=110 VAC-50/60Hz
220AC=220 VAC-50/60Hz

NO = normalmente aperto
NO = normally open

NC = normalmente chiuso
NC = normally closed