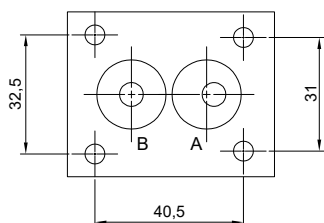
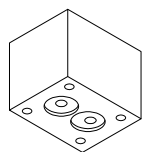
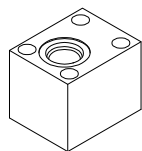
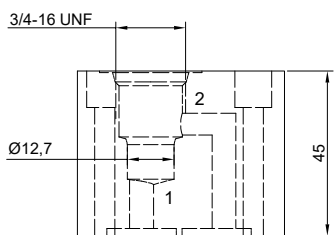


Corpo adattatore, interfaccia CETOP-03 / cavità SAE08-2 Body adaptor, CETOP-03 interface / SAE08-2 cavity



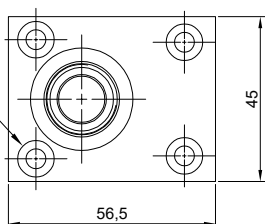
CETOP-03



Cavità SAE08-2
SAE08-2 Cavity

(2x) OR3056 - 13,95x2,62

(4x) Ø5,5 PASS.
Ø10 ↓-10 PROF.

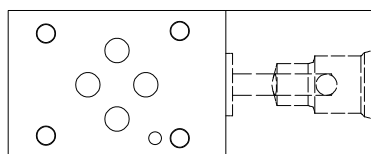
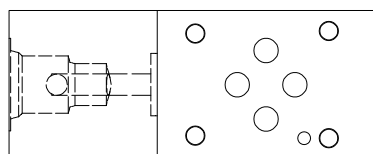
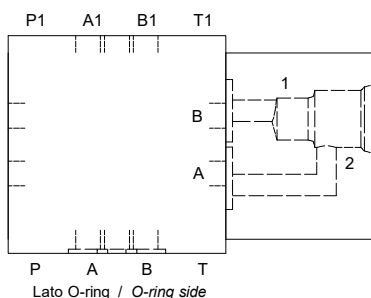
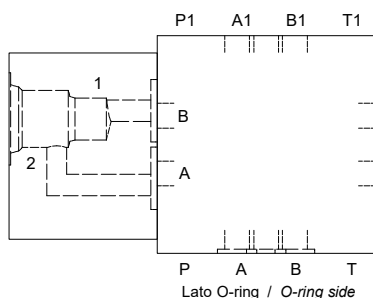


Viti TCEI M5x45
Screw TCEI M5x45

Esempio di applicazione / Application example

Montaggio Lato A / Side A mounting

Montaggio Lato B / Side B mounting

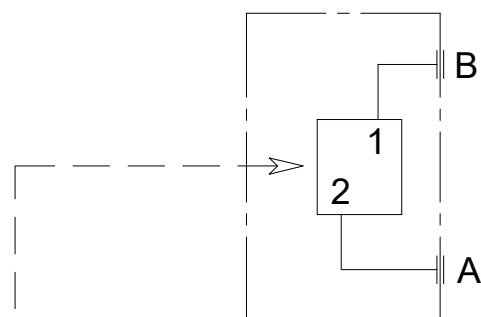


Codice di ordinazione - Ordering code

BRQ 03 **

Interfaccia CETOP-03 (NG6)
CETOP-03 interface (NG6)

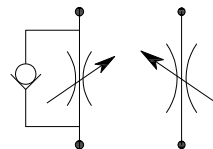
0M marcatura standard
0M standard marking
XM marcatura personalizzata
XM customized marking



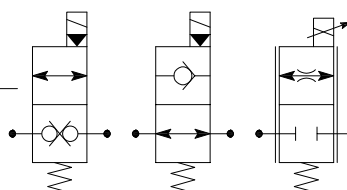
Esempi di Elementi utilizzabili SAE08-2
Examples of usable SAE08-2 Elements



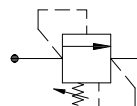
Valvola di blocco
Check valve



Regolatore di flusso
Flow regulator



Valvola elettrica
Solenoid valve



Valvola di pressione
Pressure valve

DATI TECNICI TECHNICAL DATA

Portata max (raccomandata) / Max flow (recommended)	40 Lt/min
Pressione max di lavoro / Max working pressure	350 bar
Peso / Weight	0,7 Kg
Corpo in Ghisa fosfatata / Phosphated Cast iron body	

Utilizzabile con Collettore modulare MFR03 (vedi pag. G13)
Usable with Modular manifold MFR03 (see pag. G13)